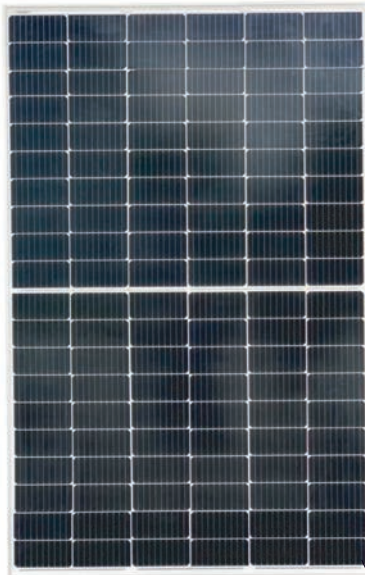


HT60-166M-xxx (xxx=360-380 in step of 5W)

**NEW**

Big Size: Cell 166\*83

**360W / 365W**  
**370W / 375W / 380W**



- Module Efficiency: 19.3%
- No. of Cells: 120 (6 × 20)
- Weight: 20.4kg
- Dimensions: 1775mm×1052mm×35mm

(Optional)  
Design of Water  
Leakage Trough

Monocrystalline



Shanghai Aerospace Automobile  
Electromechanical Co., Ltd.  
website: www.ht-saae.com

Factory:  
Lianyungang ShenZhou New Energy Co., Ltd.



Half cut cell technology can reduce the internal power loss and improve component overall power. Excellent heat dissipation avoids hot spot production.



9BB The optimized number and width of main gate lines, Maximize the light receiving area of components and Reduce component power consumption

**12Ys**  
Products  
Warranty



Designed for high voltage systems of up to 1500 VDC, increasing the string length of solar systems and saving on BoS costs

**25Ys**  
Warranty on  
power output



All the modules are sorted and packaged by amperage, reducing mismatch losses and maximizing system output.

**EL**

Microcrack resistant Double glass structure enhance reliability, triple EL tested of high quality control.



Entire module certified to with stand extreme  
2400Pa/1.5 Wind  
2400Pa/1.5 Snow

**5W**

Positive tolerance  
0/+5w guaranteed

Comprehensive and first-rate certification system

IEC61215: 2016.IEC61730: 2016 Latest Standard  
ISO9001, ISO14001 and OHSAS18001,  
meeting the highest international standards  
Strict quality control

Warranty partner



**Munich RE**

www.munichre.com/PVWarrantyPartner

